

Materials Book / 2023



prostoria

VALID FROM 01. 01. 2023

Content

- 4** Keep in Mind
- 5** Materials & Maintenance
- 6** Solid Wood Oils & Lacquers collection
- 7** Table tops
- 9** Metal colour Collection
- 10** Upholstery & Cushions

- 12** Product Chart: Upholstery Collection
- 16** Fabrics & Leathers specifications

- 20** · Fabric Category 200
- 24** · Fabric Category 300
- 33** · Fabric Category 400
- 42** · Fabric Category 500
- 48** · Fabric Category 600
- 49** · Fabric Category 700

- 52** · Leather Category 80

- 58** · Outdoor fabric category 300
- 62** · Outdoor fabric category 400
- 64** · Outdoor fabric category 600
- 65** · Outdoor fabric category 700

Keep in Mind when making your Choice

COF - CUSTOMER OWN FABRIC

- price from the Price List refers to fabrics without any patterns
- all orders submitted in COF needs to be approved from the manufacturer based on the delivered sample, min. size 15 × 20 cm
- for use of the fabrics with pattern it's necessary to submit a min. 1 ml sample, in order to make estimation of consumption of the fabric and additional work that will determine the price
- Prostoria is not responsible for any claims related to the fabric quality
- fabric needs to be delivered min. 15 days prior to the dispatch date

COL - CUSTOMER OWN LEATHER

- possibility of using leather selected by the customer is available solely with prior submission of a sample, size of approx. 20 × 30 cm
- leather consumption depends on the leather quality; natural or prefabrication flaws might increase required quantities
- Prostoria is not responsible for any claims related to the leather quality
- leather needs to be delivered min. 15 days prior to the dispatch date

Materials & Maintenance

To maintain the quality and durability of your product for as long as possible, you should follow these basic and simple guidelines:

- avoid placing the product near a source of heat and exposing it to direct sunlight as this may cause alternations in the tone and affect the hardness of the product.
- when moving the product, be careful not to drag it on the floor as such action may result in damage both to the product and the floor
- perform regular checks of the condition of the sliders as it may result in damage of the product and the floor; you can purchase additional or new sliders (plastic or felt) at the nearest salon or at the dealer where you purchased the product
- for stackable products, check the condition of the safety components; if they fall out, the products may be damaged, and you should contact the nearest salon or the dealer where you've purchased the product
- chairs and easy chairs should be stacked carefully and according to the listed stacking number to avoid any possibility of damage
- for tables and coffee tables, avoid partial covering of the surface as this may cause discoloration of the surface
- for surfaces used for shelving, be careful not to damage the surface with sharp or damp objects
- suitably protect and store products for outdoor use over winter or against adverse conditions; we recommend storing those products in a dry and airy place or using protective covers
- avoid improper use of the product, such as sitting on a backrest or armrest, or swinging or standing on a chair
- avoid placing greasy, wet, hot or cold objects directly on the solid wood surfaces, as they may leave a permanent trace

PRODUCT CONSTRUCTIONS

The inner construction of our furniture is made of panel materials (plywood) and/or metal elements, which provide the basic shape of the product. Seat and backrest supports (wave springs, elastic bands, goodside® slats), together with the foam (HR foam, polyurethane foam), make our furniture comfortable and durable.

Foams are high quality polymer materials with high elasticity and resistancy to permanent deformation. HR foam is produced by cold process based on water and does not contain any harmful chemicals. It has excellent hygienic and antiallergic properties. Polyurethane foam is made of recyclable material. We use cold and polyurethane foams of a wide range of density and hardness to provide a wide selection in obtaining the desired comfort. Moulded polyurethane foam is used in products of specific shape - the construction is soaked in foam which takes the form of a mould into which it is poured. Due to expansion, this process results in the final form ready for upholstering.

Metal parts are made of the highest quality aluminium, carbon steel and stainless steel suitable for outdoor use by the sea.

The fabrics and the leathers in our collection originate from the workshops of the most famous and renowned European manufacturers.

We approach the wood as a natural resource with great respect and responsibility. The raw material we use the most is solid wood, especially Slavonian oak. In order to promote sustainable development and environmental protection, we are part of the Slavonian Oak Cluster. We have also introduced the FSC-STD-40-004 V3-0 Certificate to guarantee the sustainable development of forest management. The ISO 14001: 2015 standard sets out requirements for the environmental management system, including the planning, establishment, implementation and monitoring of the environmental management system.

Materials & Maintenance

solid wood

Natural imperfections of wood, such as variations in colour and texture, knots and tree rings, are not considered faults and undesirable characteristics but rather values of the natural material used. Our wood is treated with oil or lacquer in such a way that the material appears as naturally as possible, emphasising the appearance of an open tree ring. Colour lacquer does not completely fill the pores of wood to highlight the natural quality of the material, and tree rings remain visible. There are no visible tree rings in lacquered plywood. Oil and lacquer on all wooden surfaces always give matte effect, which is Prostoria's visual standard for the processing and protection of the wood. Outdoor wood has an even more pronounced change in the tone and intensity of visible tree rings over time, which is not considered as a flaw but a natural quality and refinement of the product.

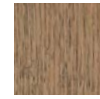
high quality oil



OAK LIGHT



OAK NATURE



OAK DARK



WALNUT EUROPEAN

outdoor oil



TEAK

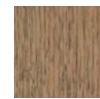
lacquer matte



OAK LIGHT



OAK NATURE



OAK DARK



ASH



WALNUT EUROPEAN

colour lacquer matte



grey white



beige



yellow



red



red brown



light green



blue



sapphire blue



antique green



dark grey



black

Wipe the surface regularly with a clean and dry cloth. If the surface of the product is dirty, you can wipe it using a well-drained cloth soaked in water or a light neutral soap. Remove any soapy residue immediately. If the surface is slightly damaged or appears matt, we recommend our wood surface maintenance kit. Avoid products containing acetone, diluents, ammonia, abrasive detergents or furniture wax. avoid placing greasy, wet, hot or cold objects directly on the solid wood surfaces, as they may leave a permanent trace.

Materials & Maintenance

table tops

Fenix NTM is a table top finish in the form of a thin laminate that is pressed to the bottom and top of the mdf. The sides of the mdf are lacquered. Fenix is a durable material that does not show fingerprints. It can be cleaned using a damp soft cloth soaked in warm water or a solution of water and mild detergent. We recommend the use of the Fenix maintenance kit (contact your nearest salon or the dealer where you purchased the product). Damages such as scratches that are not cut in can be treated thermally using an iron and a damp cloth.

MDF + FENIX NTM



0720 black



0724 dark grey



0725 light grey



0718 beige



0032 white

TRESPA HPL

Trespa Meteon outdoor table tops have a compressed surface, virtually pore-free, making them impervious to contamination. This is why Trespa Meteon® is highly resistant to most chemicals, including many non-aggressive and aggressive cleaning agents.

Do not use abrasive or polishing cleaners. Use only clean sponges and soft cloths. Algae and mould will not penetrate the pores of the material so they are easy to clean just like dust, stains or fingerprints. You can wash them off using a universal household cleaner. Rinse and wipe the board using a soft cloth to avoid any traces remaining after washing.



L 90.0.0 black



L 21.5.1 grey



L 05.0.0 white

GLASS

Glass surfaces can be cleaned with a well-drained soft cloth soaked in a mixture of alcohol and water or glass cleaner. Wipe the surface with a dry, lint-free cloth. Avoid products containing acetone, ammonia, chlorine, and solvents, abrasives, and furniture wax.



PARSOL GREY



PARSOL BRONZE

Materials & Maintenance

table tops

Compact boards are high-pressure thermoset laminates (HPL) obtained by pressing under high pressure and high temperature. Refined with decor on both sides, this multi-layer material is at the same time extremely resistant and long-lasting as well as easy to maintain. It also provides high resistance to scratches, wear, solvents, chemicals, moisture and heat. The surface of Compact boards is extremely resistant to dirt, but if necessary it can be treated with standard non-abrasive cleaners.

COMPACT BOARDS



COMPACT BLACK



COMPACT WHITE

Materials & Maintenance

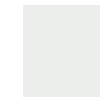
metal

All powder coated metal products and elements have a matte finish, which is Prostoria's visual standard used in the processing and protection of metallic materials. Hand-welded metal parts may have minor imperfections that do not affect the quality or function of the product, but are a reflection of the manual work of our craftsmen. Metal products intended for outdoor use have a double finish - a primer for better mechanical resistance and a coloured coating for protection against corrosion.

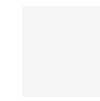
To clean powder coated metal products use a damp soft cloth soaked in a solution of water and a pH neutral detergent, and wipe using a clean, dry and soft cloth.



white



grey white



light grey



grey



dark grey



beige



black



antique green



yellow



yellow green



red



ruby red



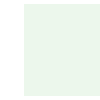
orange



red ochre



red brown



pale green



light green



nickel green



pastel blue



blue



sapphire blue

Materials & Maintenance

upholstery & cushions

Suede and other types of leather may have scars and wrinkles, or minor changes in tone or imperfections that are not considered faults but an anomaly that confirms the natural quality of the material. As such, they are considered a positive feature of the product. It is the responsibility of Prostoria to position such anomalies on less visible parts of the product when tailoring the material.

Some types of fabrics have certain properties due to finishing, such as tufting, dots or other effects on fabrics, etching of velvet, or production methods that are not considered as flaws. For fabrics, suede and other types of leather, each production lot may indicate a slight difference in colour in comparison with the pattern or a product manufactured at an earlier time. To properly maintain the leather and fabrics, visit the manufacturer's website or www.prostoria.eu and follow the instructions.

Products made with leather or fabric should not be exposed to direct light and positioned at least 1 meter away from the source of the heat, as those factors may contribute to discoloration or drying of the leather, which can cause cracks.

Upholstered sofas should be vacuumed regularly using a suitable extension and ventilated to prevent deterioration and impurities. Due to use, the fabric will eventually need to be straightened and seams adjusted manually. The folds can be straightened using steam. In case of spillage, remove the liquid immediately by tapping with absorbent paper or cloth. Do not rub the stain!

The velour covers should also be regularly vacuumed or wiped with a cloth, always following the direction of the thread. Aniline leather has no or very light surface protection and, by its nature, gains patina and traces of use over time. Semi-aniline leather has a lightweight surface protection so these furniture sets can be vacuumed and stains cleaned using a damp cloth soaked in the water, a light neutral soap, or a specialized leather care agent. Remove soap marks immediately using a dry, soft, cotton cloth. Be careful not to let too much water soak into the pores. Always remove stains moving from the edge towards the centre of the stain, so as not to expand the affected area. Avoid concentrated detergents or agents containing bleach, ammonia, or products used for cleaning and protecting of clothing and shoes.

The Outdoor textiles are water-repellent and fast drying. They are resistant to negative environmental impacts and damage caused by sun, seawater and chlorine. To find out more about the properties and methods of care and maintenance of the Outdoor textile, visit the website linked below.

Cushions can be filled with 100% feathers and down mixture, or with 100% polyester fibre filling. In order for the cushions to look good and provide comfort for as long as possible, they need to be regularly aerated and their filling shaken, which will allow them to return to their original shape. We recommend rotating the cushions (top-bottom and front-back sides) so that they are equally used on all sides. Cushions filled with feathers have a 100% goose feathers and down filling, without chemical treatment. They should be shaken and tapped regularly to redistribute the filling and reduce the effect of flattening.

For Warranty and Maintenance details, visit:
www.prostoria.eu/en/professionals

Product Chart:

NOTE - PLUS + HIGHLY RECOMMENDED | DOT • AVAILABLE | X NOT AVAILABLE

	CONTOUR 200	CUBA 200	CAJIC BIC 200	ATLAS 300	BOEMAN 300	CREPE 300	DUFFY 300	GORDON 300	HANU 300	MYSTIC 300	ORSETTO 300	TUNDRA 300	ARCO 400
3ANGLE	•	•	+	•	•	•	•	•	•	•	•	•	+
ABSENT	•	•	•	•	•	•	•	•	×	×	+	•	+
BAVUL	•	•	•	+	+	+	+	+	•	+	+	•	+
BIK CUSHION	+	+	+	+	+	+	+	+	+	+	+	+	+
CLASSIC	•	•	•	•	+	+	+	+	+	•	+	•	+
CLOUD	×	×	•	×	•	•	•	+	•	•	•	•	•
COMBINE	•	×	•	•	+	+	•	+	•	•	+	•	+
COMBO	•	•	•	•	•	•	+	+	•	•	+	•	+
CONVERT	•	•	•	+	•	•	•	•	•	•	•	•	+
DOBRA	•	•	•	+	•	•	•	•	•	•	•	•	•
ECHO	•	×	•	×	•	•	•	+	×	•	+	•	+
ELEGANCE	•	•	+	•	•	•	•	+	•	•	•	•	+
ELEGANCE LUX	•	×	+	×	•	•	•	+	•	•	+	•	+
FADE	•	•	•	•	•	•	•	•	•	•	•	•	+
IMPRESSION	•	•	+	•	+	+	•	+	×	•	+	•	+
JUGO	×	×	×	×	×	×	×	×	×	×	×	×	×
KLASTER	•	•	•	•	•	•	•	•	•	•	+	•	+
KONTRAPUNKT	•	•	•	•	•	•	•	+	•	•	+	•	+
LAYOUT	•	•	•	•	•	•	•	+	•	•	+	•	•
MATCH	•	•	•	•	•	•	+	+	•	•	+	+	+
MONK EASY CHAIRS, CHAIRS, BARSTOOLS WITH BACKREST	•	•	•	•	•	•	•	+	•	•	+	•	+
MONK BARSTOOLS	•	•	•	+	•	•	•	+	+	•	+	•	+
MONK BENCH CUSHION	•	•	•	•	•	•	•	+	•	•	+	•	+
OBLIKANT COVER	•	•	•	+	•	•	•	+	+	•	+	•	+
OBLIQUE	•	•	•	+	•	•	•	•	•	•	•	•	+
OSMO CUSHION	×	×	×	×	×	×	×	×	×	×	×	×	×
PIUN	•	•	•	+	•	•	•	•	•	•	+	•	+
PIL-LOW	•	•	•	•	×	×	×	×	•	•	×	×	+
POLYGON	•	•	•	+	•	•	•	•	•	•	•	•	+
REVOLVE	•	•	•	•	•	•	•	•	×	•	•	×	+
RHOMB CUSHION	•	•	•	+	•	•	•	•	•	•	•	•	+
ROSTRUM *	•	•	•	•	•	•	•	•	•	•	•	•	+
SABOT	•	•	•	•	+	+	•	+	•	•	•	•	+
SEAM	•	•	•	•	+	+	•	•	•	•	•	•	+
SEGMENT	•	•	•	•	•	•	•	•	•	•	•	•	+
SEPARÉ / * ROSTRUM DIVIDERS	×	×	×	×	×	×	×	×	×	×	•	×	+
STRAIN EASY CHAIR	•	•	•	+	•	•	•	+	•	•	+	•	+
STRAIN LOW CHAIR	•	•	•	+	•	•	•	•	•	•	•	•	+
STRAIN & UNSTRAIN CHAIRS	•	•	•	+	•	•	•	•	•	+	•	•	+
UMOMOKU	×	×	×	×	×	×	×	×	×	×	×	×	×
UP-LIFT	•	•	•	•	•	•	•	•	•	•	•	×	•
TINKER	•	×	•	•	+	+	+	+	×	•	+	•	+
TOGGLE	•	•	+	•	•	•	•	+	•	•	+	•	+
TRIFIDAE	•	•	•	•	•	•	•	•	•	•	•	•	+
TRIFIDAE CHAIR & EASY CHAIR	•	•	•	•	•	•	•	•	•	×	•	•	+
CUSHIONS	•	•	+	•	+	+	+	+	•	+	+	•	+

Product Chart:

NOTE - PLUS + HIGHLY RECOMMENDED | DOT • AVAILABLE | X NOT AVAILABLE

	CREDO 400	DIVINA 3 400	DIVINA MD 400	DIVINA MBLANCE 400	NOVIUM 400	PLANUM 400	HALINGDAL 65 500	MIZMAZE 500	MOSS 500	STREICUT TRIO 3 500	UNIFORM MELANGE 600	CODA 2 700	SISU 700
3ANGLE	+	+	+	+	•	•	+	•	•	+	•	+	•
ABSENT	+	•	•	•	+	+	+	+	•	•	+	•	•
BAVUL	+	+	+	+	•	+	+	+	•	•	•	•	•
BIK CUSHION	+	•	•	•	•	•	+	•	+	•	•	•	•
CLASSIC	+	•	•	•	•	•	+	•	+	•	•	•	•
CLOUD	+	×	×	×	×	×	+	×	+	×	×	+	+
COMBINE	+	•	•	•	•	×	+	•	+	•	•	+	+
COMBO	+	•	•	•	+	•	+	•	+	•	•	•	•
CONVERT	•	+	+	+	+	•	+	•	•	+	•	•	•
DOBRA	+	+	+	+	•	•	+	•	•	•	•	+	•
ECHO	+	•	•	•	•	×	+	•	+	•	•	+	•
ELEGANCE	+	•	•	•	•	•	+	•	+	•	•	+	•
ELEGANCE LUX	+	•	•	•	•	×	+	•	+	•	•	+	•
FADE	+	+	+	+	•	•	+	•	+	•	•	•	•
IMPRESSION	+	•	•	•	•	•	+	•	+	•	•	+	+
JUGO	×	×	×	×	×	×	×	×	×	×	×	×	×
KLASTER	•	+	+	+	•	•	+	+	+	•	+	+	•
KONTRAPUNKT	+	•	•	•	•	•	+	•	+	+	•	•	•
LAYOUT	+	•	•	•	•	•	+	•	+	•	•	•	•
MATCH	+	•	•	•	+	•	+	•	+	•	•	+	+
MONK EASY CHAIRS, CHAIRS, BARSTOOLS WITH BACKREST	+	+	+	+	•	•	+	+	+	+	+	•	•
MONK BARSTOOLS	+	+	+	+	•	•	+	+	+	+	+	•	•
MONK BENCH CUSHION	+	+	+	+	•	•	+	•	+	+	•	•	•
OBLIKANT COVER	+	+	+	+	•	•	+	•	+	+	•	•	•
OBLIQUE	+	+	+	+	•	•	+	•	•	+	•	•	•
OSMO CUSHION	×	×	×	×	×	×	×	×	×	×	×	×	×
PIUN	•	+	+	+	•	•	+	•	+	+	•	•	•
PIL-LOW	•	+	+	+	+	•	+	•	×	•	•	•	•
POLYGON	+	•	•	•	+	•	+	+	•	+	•	•	•
REVOLVE	•	+	+	+	•	•	+	•	•	•	•	×	×
RHOMB CUSHION	•	+	+	+	•	•	+	•	•	+	•	+	•
ROSTRUM *	+	+	+	+	•	•	+	•	•	+	•	•	•
SABOT	+	+	+	+	•	•	+	•	+	•	•	+	•
SEAM	+	+	+	+	•	•	+	•	+	+	•	•	•
SEGMENT	+	+	+	+	•	•	+	•	•	+	•	•	•
SEPARÉ / * ROSTRUM DIVIDERS	+	+	+	+	×	×	+	•	×	+	+	•	+
STRAIN EASY CHAIR	+	+	+	+	•	•	+	•	+	•	•	+	•
STRAIN LOW CHAIR	+	+	+	+	•	•	+	•	•	+	•	•	•
STRAIN & UNSTRAIN CHAIRS	+	+	+	+	+	•	+	•	•	+	•	•	•
UMOMOKU	×	×	×	×	×	×	×	×	×	×	×	×	×
UP-LIFT	+	+	+	+	•	•	+	•	•	•	•	•	•
TINKER	+	•	•	•	•	•	+	•	+	•	•	+	+
TOGGLE	+	+	+	+	•	•	+	•	+	+	•	•	•
TRIFIDAE	+	+	+	+	+	•	+	•	•	•	+	•	•
TRIFIDAE CHAIR & EASY CHAIR	+	+	+	+	+	•	+	•	•	•	+	•	•
CUSHIONS	+	+	+	+	+	•	+	+	+	•	•	+	+

Product Chart:

NOTE - PLUS + HIGHLY RECOMMENDED | DOT • AVAILABLE | X NOT AVAILABLE

	CERNO 80	DIVINA 80	ELMO- SADDLE 80	TUNDRA 80	ACERO OUTDOOR 300	APACHE OUTDOOR 300	ERROUD OUTDOOR 300	PATIO OUTDOOR 300	TAN TAN OUTDOOR 400	ZAGORA OUTDOOR 400	ROCCO OUTDOOR 600	LIBERA OUTDOOR 700
3ANGLE	•	•	X	X	X	X	X	X	X	X	•	•
ABSENT	X	X	X	X	X	X	X	X	X	X	•	•
BAVUL	X	X	X	X	X	X	X	X	X	X	•	•
BIK CUSHION	•	•	X	•	X	X	X	X	X	X	•	•
CLASSIC	•	•	X	•	X	X	X	X	X	X	•	•
CLOUD	+	+	X	+	X	X	X	X	X	X	+	+
COMBINE	•	•	X	•	X	X	X	X	X	X	+	+
COMBO	•	•	X	•	X	X	X	X	X	X	•	•
CONVERT	•	+	X	•	+	+	+	+	+	+	•	•
DOBRA	+	+	+	+	X	X	X	X	X	X	+	+
ECHO	•	+	X	•	X	X	X	X	X	X	•	•
ELEGANCE	+	+	X	+	X	X	X	X	X	X	•	•
ELEGANCE LUX	+	+	X	+	X	X	X	X	X	X	•	•
FADE	X	X	X	X	X	X	X	X	X	X	•	•
IMPRESSION	X	X	X	X	X	X	X	X	X	X	+	+
JUGO	X	X	X	X	+	+	+	+	+	+	+	+
KLASTER	X	X	X	X	X	X	X	X	X	X	+	+
KONTRAPUNKT	+	+	X	•	X	X	X	X	X	X	+	+
LAYOUT	X	X	X	X	X	X	X	X	X	X	+	+
MATCH	•	•	X	•	X	X	X	X	X	X	+	+
MONK EASY CHAIRS, CHAIRS, BARSTOOLS WITH BACKREST	X	X	X	X	X	X	X	X	X	X	+	+
MONK BARSTOOLS	•	•	X	•	X	X	X	X	X	X	+	+
MONK BENCH CUSHION	•	•	X	•	X	X	X	X	X	X	+	+
OBLIKANT COVER	X	X	X	X	X	X	X	X	X	X	+	+
OBLIQUE	X	X	X	X	+	+	+	+	+	+	+	+
OSMO CUSHION	X	X	X	X	+	+	+	+	+	+	+	+
PIUN	X	X	X	X	X	X	X	X	X	X	+	+
PIL-LOW	X	X	X	X	X	X	X	X	X	X	X	X
POLYGON	•	•	•	X	+	+	+	•	•	+	•	•
REVOLVE	X	X	X	X	X	X	X	X	X	X	X	X
RHOMB CUSHION	+	+	+	+	+	+	+	+	+	+	+	+
ROSTRUM *	X	X	X	X	X	X	X	X	X	X	•	•
SABOT	X	X	X	X	X	X	X	X	X	X	+	+
SEAM	•	•	X	•	X	X	X	X	X	X	•	•
SEGMENT	•	•	X	•	X	X	X	X	X	X	•	•
SEPARÉ / * ROSTRUM DIVIDERS	X	X	X	X	X	X	X	X	X	X	X	X
STRAIN EASY CHAIR	•	•	X	•	X	X	X	X	X	X	•	•
STRAIN LOW CHAIR	•	•	X	•	X	X	X	X	X	X	•	•
STRAIN & UNSTRAIN CHAIRS	•	•	X	•	X	X	X	X	X	X	•	•
UMOMOKU	X	X	X	X	+	+	+	+	+	+	+	+
UP-LIFT	X	X	X	X	X	X	X	X	X	X	•	•
TINKER	•	•	X	•	X	X	X	X	X	X	•	•
TOGGLE	•	•	•	•	X	X	X	X	X	X	•	•
TRIFIDAE	•	•	X	•	X	X	X	X	X	X	•	•
TRIFIDAE CHAIR & EASY CHAIR	X	X	X	X	X	X	X	X	X	X	•	•
CUSHIONS	+	•	X	•	•	•	•	•	•	•	•	•

Fabrics & Leathers Specifications

fabric	collection	specification	pilling	martindale cycles	light fastness	maintenance
200	CONTOUR	FABRIC 100% polyester	4-5	85.000	5-7	
200	CURA	FABRIC 98% post-consumer recycled polyester, 2% polyester	4-5	100.000	5-8	
200	GARC BIC	FABRIC 100% cotton	-	30.000	4-5	
300	ATLAS	FABRIC 90% new wool worsted, 10% nylon	4-5	100.000	6-7	
300	BOEMIAN	FABRIC 5% cotton, 13% linen, 25% viscose, 15% wool, 25% polyester, 15% polycarbonate, 2% polyamide	-	45.000	4-5	
300	CREPE	FABRIC 50% cotton, 33% viscose, 17% linen	3-4	35.000	4-5	
300	DUFFY	FABRIC 81% polyester, 19% cotton	4	100.000	6	
300	GORDON	FABRIC 31% viscose, 28% cotton, 20% wool, 10% polyamide, 6% polyester, 5% other	3-4	30.000	5	
300	HAKU	FABRIC 100% polyurethane, 100% polyester (backing)	5	100.000	7	
300	MYSTIC	FABRIC 100% polyester	5	150.000	4-5	
300	ORSETTO	FABRIC 34% viscose, 33% acrylic, 17% wool, 8% polyester, 4% flax, 4% cotton	5	80.000	4-5	
300	TUNDRA	FABRIC 42% viscose, 36% cotton, 16% acrylic, 6% polyester	3-4	30.000	5	
400	ARCO	FABRIC 95% virgin wool, 5% polyamide	4-5	70.000	5	
400	CREDO	FABRIC 95% virgin wool, 5% polyamide	4-5	100.000	5	
400	DIVINA 3	FABRIC 100% new wool	3	45.000	5-6	
400	DIVINA MD	FABRIC 100% new wool	3	45.000	5-6	
400	DIVINA MELANGE	FABRIC 100% new wool	3	45.000	6-7	
400	NOVUM	FABRIC 96% virgin wool, 4% polyamide	4-5	90.000	5-8	
400	PLANUM	FABRIC 44% new wool, 42% polyester, 14% nylon	4	100.000	5-6	
500	HALLINGDAL 65	FABRIC 70% new wool, 30% viscose	3-4	100.000	7	
500	MIZMAZE	FABRIC 60% polyester, 30% wool, 10% nylon	4	100.000	6	
500	MOSS	FABRIC 52% cotton, 22% viscose, 14% polyacrylic, 6% linen, 3% polyester 3% nylon	4-5	50.000	5-7	
500	STEELCUT TRIO 3	FABRIC 90% new wool worsted, 10% nylon	4	100.000	6-7	
600	UNIFORM MELANGE	FABRIC 68% wool, 22% polyamide, 10% polyester	4	100.000	6	
700	CODA 2	FABRIC 90% new wool, 10% nylon	4	100.000	6	
700	SISU	FABRIC 91% new Norwegian wool, 8% new New Zealand wool, 1% nylon	3-4	70.000	7	

leather	collection	specification
80	CERVO	LEATHER aniline leather, slightly pigmented
80	DIVINA	LEATHER aniline leather, organic pigment
80	ELMOSADDLE	LEATHER aniline leather, organic pigment
80	TUNDRA	LEATHER aniline leather, organic pigment
indoor & outdoor fabric		
300	ACERO	OUTDOOR 100% solution dyed acrylic
300	APACHE	OUTDOOR 100% solution dyed acrylic
300	ERFOUD	OUTDOOR 100% solution dyed acrylic
300	PATIO	OUTDOOR 100% trevira CS
400	TAN TAN	OUTDOOR 100% solution dyed acrylic
400	ZAGORA	OUTDOOR 100% solution dyed acrylic
600	ROCOCO	OUTDOOR 97% polypropylene, 3% polyester
700	LIBERA	OUTDOOR 100% polypropylene

collection	specification	colour fastness uv outdoor	martindale cycles	colour fastness dry & wet friction	maintenance
OUTDOOR	100% solution dyed acrylic	-	40.000	7-8	
OUTDOOR	100% solution dyed acrylic	-	45.000	7-8	
OUTDOOR	100% solution dyed acrylic	-	50.000	7-8	
OUTDOOR	100% trevira CS	4-5	50.000	7	
OUTDOOR	100% solution dyed acrylic	-	50.000	7-8	
OUTDOOR	100% solution dyed acrylic	-	50.000	7-8	
OUTDOOR	97% polypropylene, 3% polyester	-	40.000	-	
OUTDOOR	100% polypropylene	-	40.000	-	

- Do not wash in water
- Wash in cold water
- Hand wash only
- Do not bleach
- Bleach
- Do not tumble dry
- Tumble dry
- Machine wash at 30°C max
- Machine wash at 30°C max, mild process
- Machine wash at 30°C max, very mild process
- Machine wash at 40°C max
- Dry clean
- Do not dry clean
- Do not centrifuge
- To iron use cool setting (max 110°C)
- To iron use medium setting (max 150°C)
- To iron use hot setting (max 200°C)
- Do not iron
- Iron on reverse side
- Dry clean using perchloroethylene only
- Dry clean with perchloroethylene, use precautions

Fabric collection

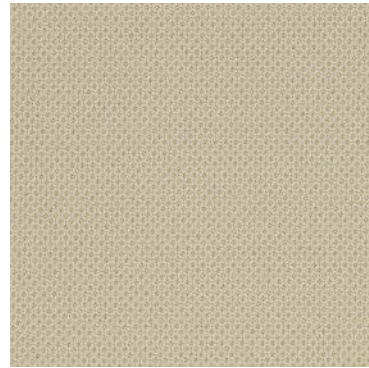


prostoria

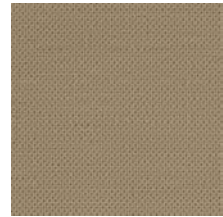
Category 200

Contour

collection: Fabric
composition: 100% polyester
width: 140 cm +/- 2 cm
piling: 4-5
abrasion resistance: 85.000 cycles
light fastness: 5-7
rubbing fastness: 4-5 dry and wet



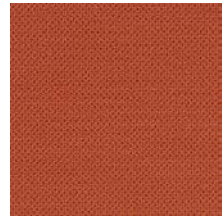
61138



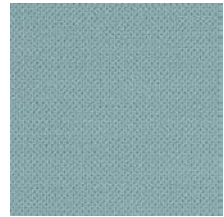
61215



62041



61216



66213



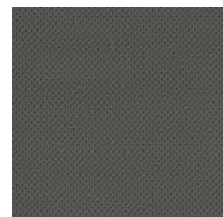
67033



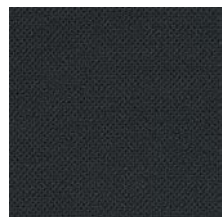
68238



68239



60003

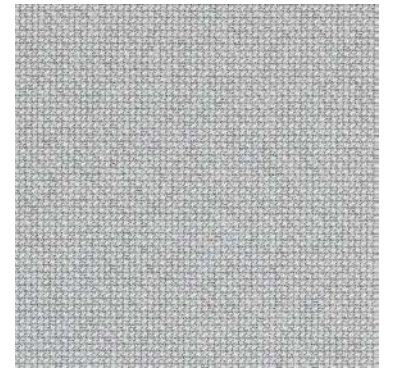


68130

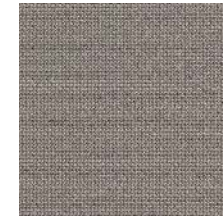
Category 200

Cura

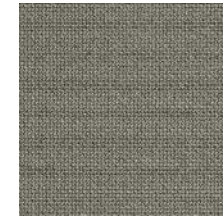
collection: Fabric
composition: 98% post-consumer recycled polyester / 2% polyester
width: 140 cm +/- 2 cm
piling: 4-5
abrasion resistance: 100.000 cycles
light fastness: 5-8
rubbing fastness: 4-5 dry and wet



60000



61168



61259



61169



62083



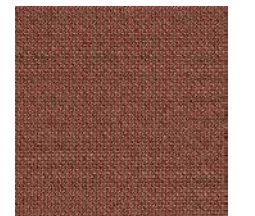
62084



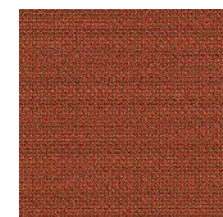
62082



61260



61257



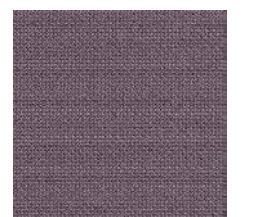
63078



63012



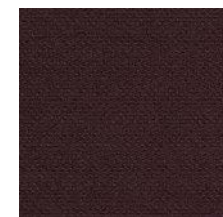
64013



64194



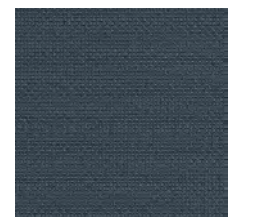
64195



65137



66167



66166

Category 200

Cura



Garc Bic

Category 200

collection: Fabric
composition: 100% cotton
width: 140 cm +/- 3 cm
abrasion resistance: 30.000 cycles
light fastness: class 4-5



Category 300

Atlas

collection: Fabric
composition: 90% new wool worsted,
10% nylon
width: 150 cm +/- 2 cm
piling: 4-5
abrasion resistance: 100.000 cycles
light fastness: class 6-7
rubbing fastness: 4-5 dry and wet



461



561



501



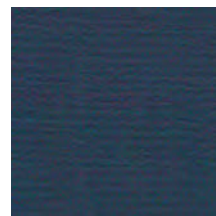
621



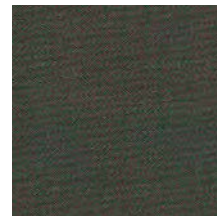
681



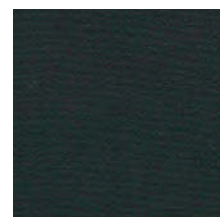
641



861



961



981



111

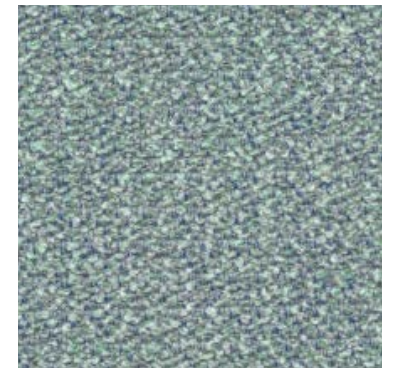


161

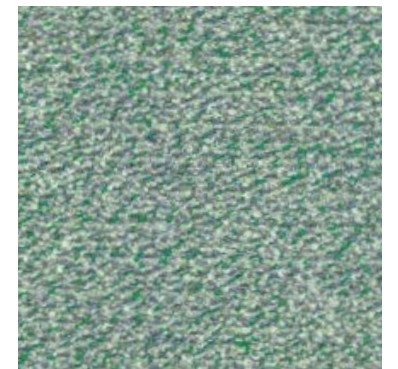
Category 300

Boemian

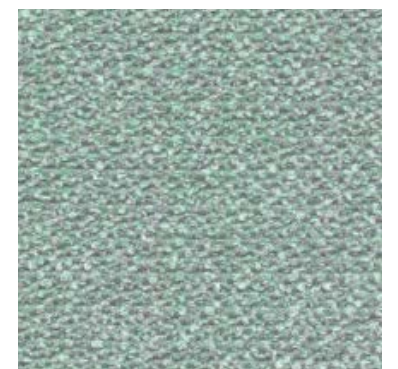
collection: Fabric
composition: 5% cotton, 13% linen,
25% viscose, 15% wool, 25% PL, 15% PC, 2% PA
width: 137 cm +/- 3 %
abrasion resistance: 45.000 cycles
light fastness: class 4-5



040



031



030

Category 300

Crepe

collection: Fabric
composition: 50% cotton, 33% viscose,
17% linen
width: 140 +/- 3 %
piling: 3-4
abrasion resistance: 35.000 cycles
light fastness: class 4-5



034



039



103

Category 300

Duffy

collection: Fabric
composition: 81% Polyester, 19% Cotton
width: 140 cm +/-2%
piling: 4
abrasion resistance: 100.000 cycles
light fastness: class 6



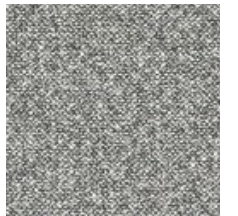
009



007



041



018



023

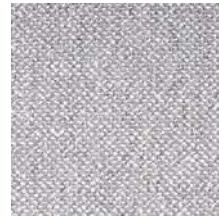
Category 300

Gordon

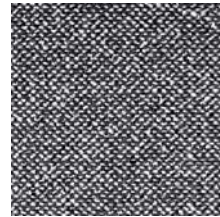
collection: Fabric
composition: 31% viscose, 28% cotton, 20% wool,
10% polyamide 6% polyester 5% other
width: 140 cm +/- 2 cm
piling: 3-4
abrasion resistance: 30.000 cycles
light fastness: class 5
rubbing fastness: 4-5 wet and dry



03/1



90/1



98/2

Category 300

Haku

collection: Fabric
composition: 100% polyurethane, 100% polyester
on the backside
width: approx 140 cm
piling: 4
abrasion resistance: 100.000 cycles
light fastness: class 7
rubbing fastness: 4-5 dry and wet
manufacturer warranty: 10 years



221



321



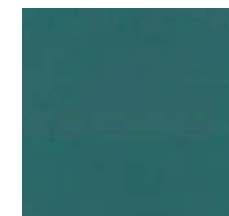
351



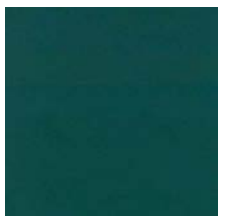
961



941



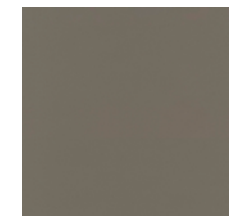
871



981



241



281

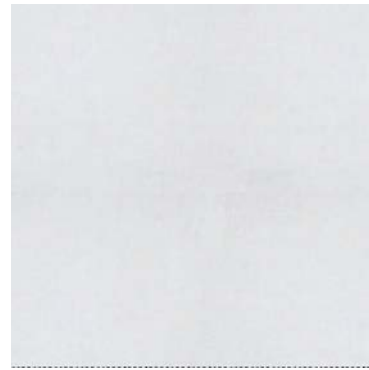


191

Category 300

Mystic

collection: Fabric
composition: 100% polyester
width: 140 cm
piling: 5
abrasion resistance: 150.000 cycles
light fastness: class 4-5



01



032



012



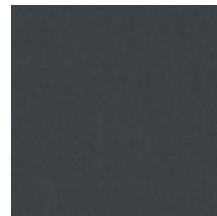
105



062



056



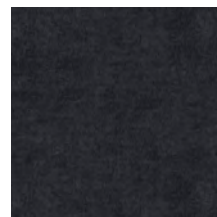
311



395



069



214

Category 300

Orsetto

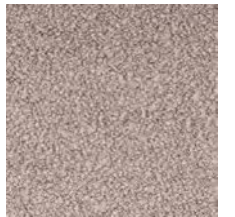
collection: Fabric
composition: 34% viscose, 33% acrylic,
17% wool, 8% polyester, 4% flax, 4% cotton
width: 138-140 cm
piling: 5
abrasion resistance: 80.000 cycles
light fastness: class 5
rubbing fastness: 5 dry, 3-4 wet



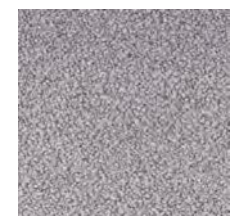
01/1



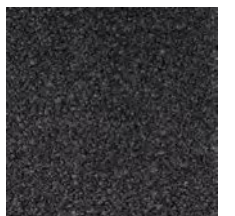
01/2



05/10



02/22



98/21

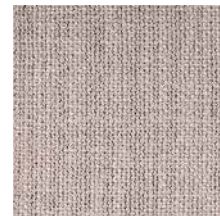
Category 300

Tundra

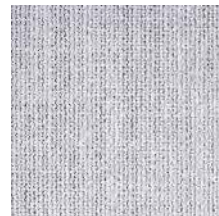
collection: Fabric
 composition: 42% viscose, 36% cotton
 16% acrylic, 6% polyester
 width: approx 140 cm
 piling: 3-4
 abrasion resistance: 30.000 cycles
 light fastness: class 5
 rubbing fastness: 4-5 wet and dry



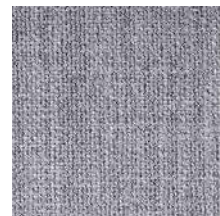
003



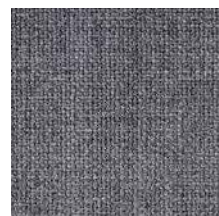
004



008



010



011



012

Category 400

Arco

collection: Fabric
 composition: 95% WV 5% PA
 width: 140 cm
 piling: 4-5
 abrasion resistance: 70.000 cycles
 light fastness: class 5
 rubbing fastness: 4-5 dry and wet



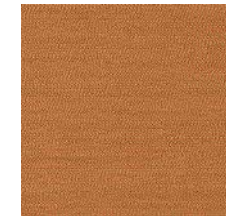
arctic



corn



jade



safran



vivid



breeze



samba



azur



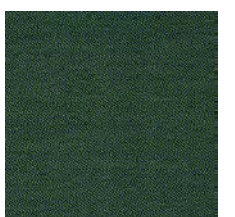
mare



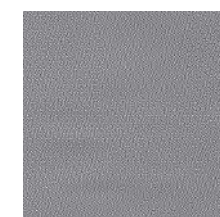
aqua



pond



forest



fels



kies



carbon

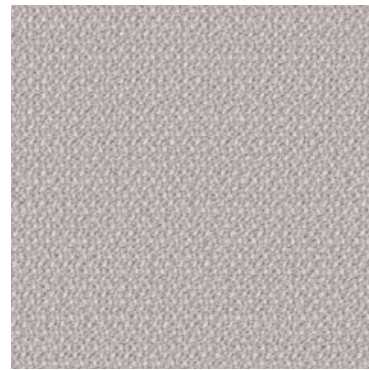


lanoso

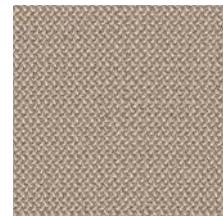
Category 400

Credo

collection: Fabric
composition: 95% wV, 5% PA
width: 140 cm
piling: 4-5
abrasion resistance: 100.000 cycles
light fastness: class 5



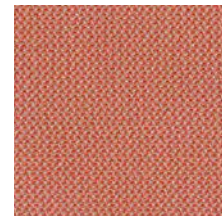
calla



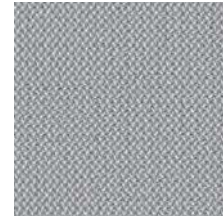
macadamia



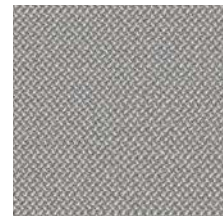
aureo



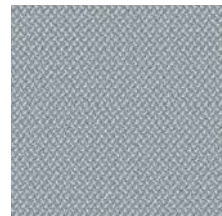
grapefruit



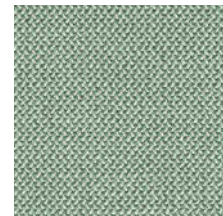
chalk



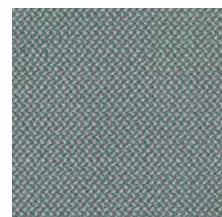
zinn



diamond



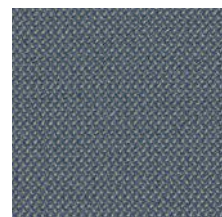
aloe



lake



jaspis



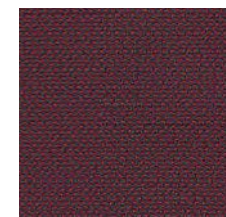
sea



navy

Category 400

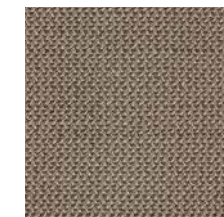
Credo



rubin



carbon



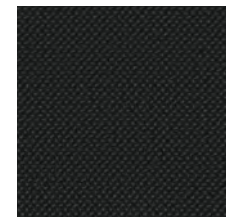
fango



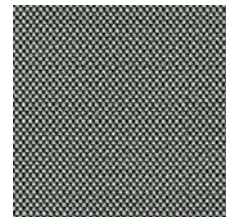
schiefer



asphalt



black

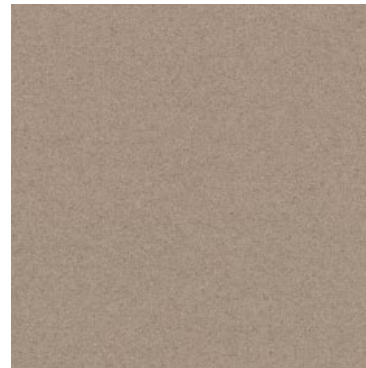


pepper

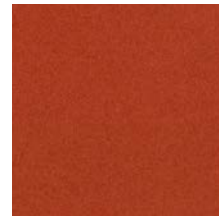
Category 400

Divina 3

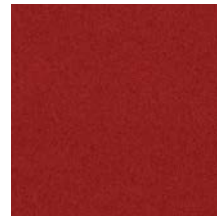
collection: Fabric
composition: 100% new wool
width: 150 cm
piling: 3
abrasion resistance: 45.000 cycles
light fastness: class 5-6
rubbing fastness: 4-5 dry, 3-5 wet
manufacturer warranty: 10 years



224



552



584



893



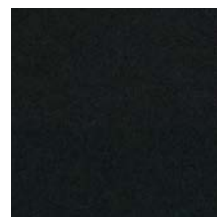
886



944



173



191

prostoria

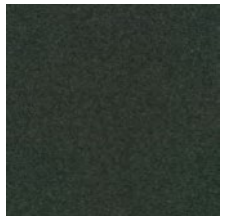
Category 400

Divina MD

collection: Fabric
composition: 100% new wool
width: 150 cm
piling: 3
abrasion resistance: 45.000 cycles
light fastness: class 5-6
rubbing fastness: 4-5 dry, 3-5 wet
manufacturer warranty: 10 years



873



973

prostoria

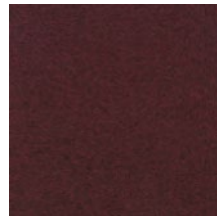
Category 400

Divina Melange 3

collection: Fabric
composition: 100% new wool
width: 150 cm
piling: 3
abrasion resistance: 45.000 cycles
light fastness: class 6-7
rubbing fastness: 4-5 dry, 3-5 wet
manufacturer warranty: 10 years



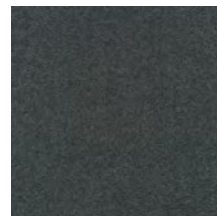
227



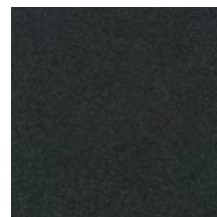
581



147



170



180

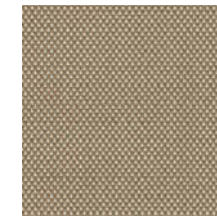
Novum

Category 400

collection: Fabric
composition: 96% virgin wool, 4 % polyamide
width: 150 cm +/- 2 cm
piling: 4-5
abrasion resistance: 90.000 cycles
light fastness: class 5-8
rubbing fastness: 4-5 dry and wet



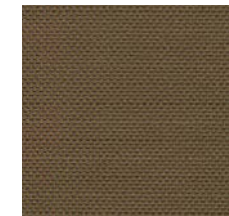
angora



cocos



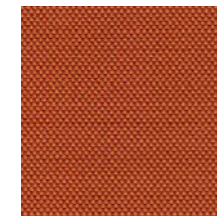
paradise



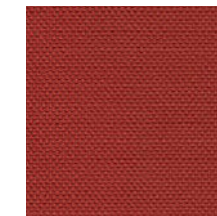
cacao



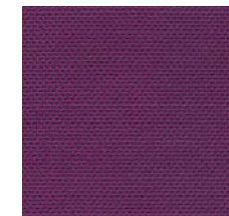
curry



coral



heart



viola



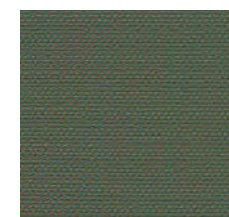
prune



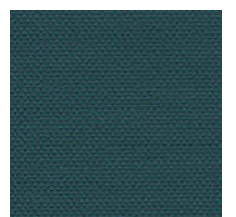
lagoon



delphi



mambo



samoa

Category 400

Novum



Category 400

Planum

collection: Fabric
composition: 44% new wool, 42% polyester,
14% nylon
width: 160 cm
piling: 4
abrasion resistance: 100.000 cycles
light fastness: class 5-6
rubbing fastness: 4-5 dry and wet
manufacturer warranty: 5 years



521



Category 500

Hallingdal 65

collection: Fabric
composition: 70% new wool, 30% viscose
width: 130 cm
piling: 3-4
abrasion resistance: 100.000 cycles
light fastness: class 7
rubbing fastness: 4-5 dry, 3-5 wet
manufacturer warranty: 10 years



200



220



350



407



457



590



674



657



687



573



763



840



850



810



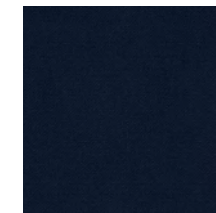
754

Category 500

Hallingdal 65



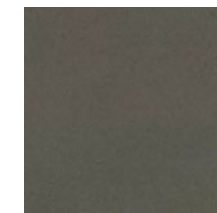
733



764



890



944



980



960



110



116



130



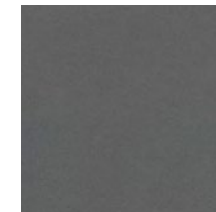
166



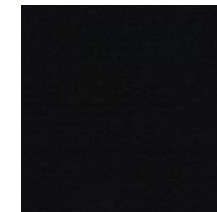
123



153



173



190

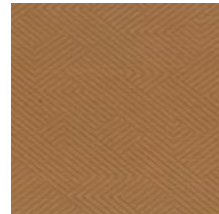
Category 500

Mizmaze

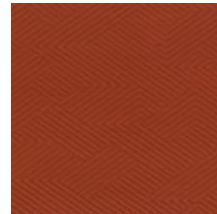
collection: Fabric
composition: 60% polyester, 30% wool,
10% nylon
width: 163 cm
piling: 4
abrasion resistance: 100.000 cycles
light fastness: class 6
rubbing fastness: 4 dry, 4-5 wet
manufacturer warranty: 10 years



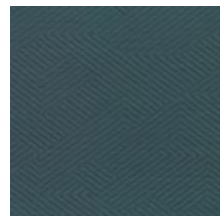
212



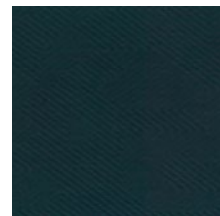
322



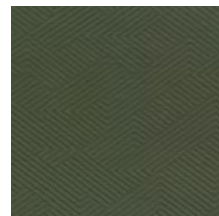
562



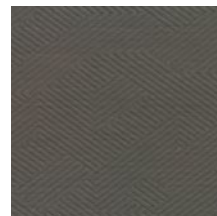
762



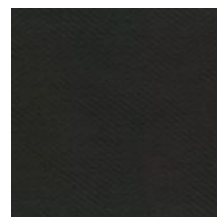
882



962



252



392

Moss

Category 500

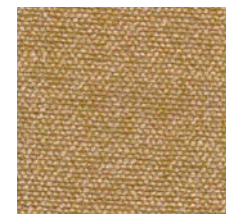
collection: Fabric
composition: 52% cotton, 22% viscose
14% polyacrylic, 6% linen, 3% polyester, 3% nylon
width: 138 cm
piling: 4-5
abrasion resistance: 50.000 cycles
light fastness: class 5-7
rubbing fastness: 4-5 dry and wet
manufacturer warranty: 2 years



011



005



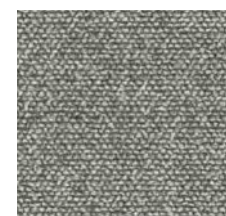
021



010



003



006



015



002

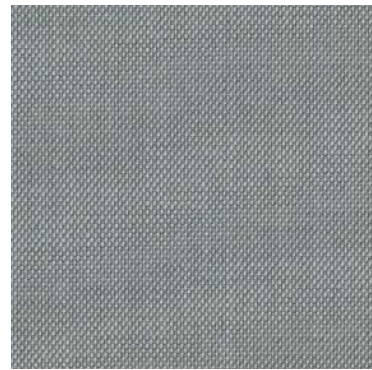


001

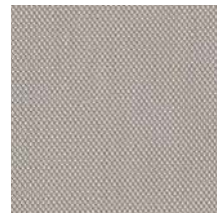
Category 500

Steelcut Trio 3

collection: Fabric
composition: 90% new wool worsted, 10% nylon
width: approx 140 cm
piling: 4
abrasion resistance: 100.000 cycles
light fastness: class 6-7
rubbing fastness: 4-5 dry and 3-5 wet
manufacturer warranty: 10 years



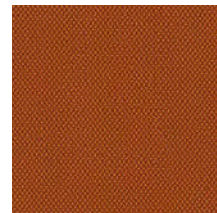
113



205



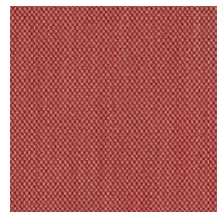
453



576



533



636



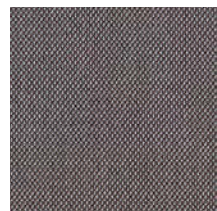
686



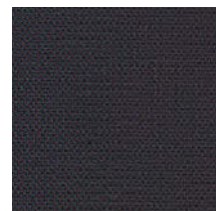
645



806



336



776



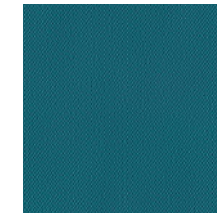
756



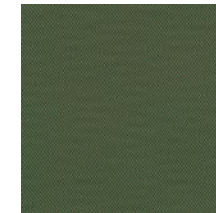
883

Category 500

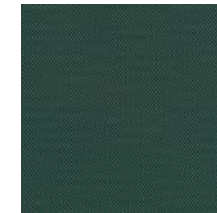
Steelcut Trio 3



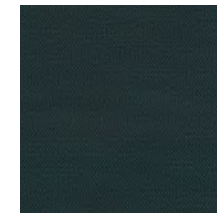
983



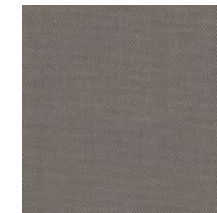
946



966



996



246



266



153



176

Category 600

Uniform Melange

collection: Fabric
composition: 68% new wool, 22% nylon,
10% polyester
width: 165 cm
piling: 4
abrasion resistance: 80.000 cycles
light fastness: class 6
rubbing fastness: 4-5 dry and wet
manufacturer warranty: 5 years



553



363

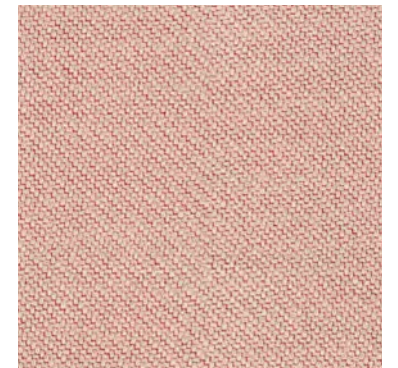


933

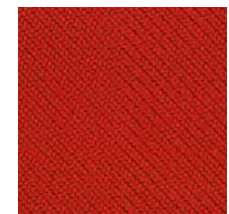
Category 700

Coda 2

collection: Fabric
composition: 90% wool, 10% nylon
width: 140 cm
piling: 4
abrasion resistance: 100.000 cycles
light fastness: class 6
rubbing fastness: 4-5 dry and 4 wet
manufacturer warranty: 10 years



116



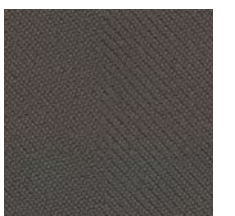
610



962



762



182

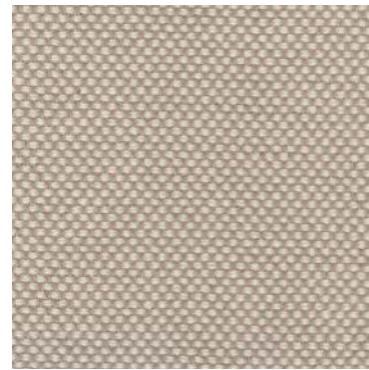


100

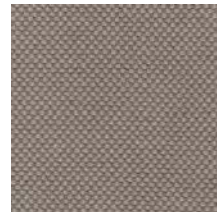
Category 700

Sisu

collection: Fabric
composition: 91% new Norwegian wool,
8% new New Zealand wool, 1% nylon
width: approx 142 cm
piling: 3-4
abrasion resistance: 70.000 cycles
light fastness: class 7
rubbing fastness: 4-5 dry and wet
manufacturer warranty: 10 years



105



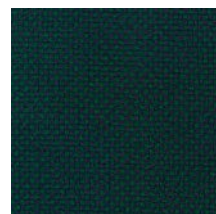
125



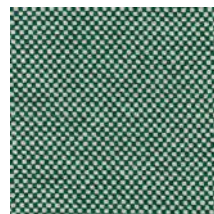
175



195



885



805



405



165

Leather collection

Category 80

Cervo

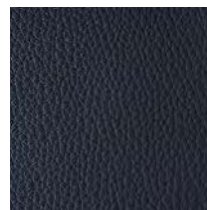
collection: Leather
origin: scandinavian bullhides
thickness: 1,5 - 1,7 mm
light fastness: 4
surface: aniline – slightly pigmented



354



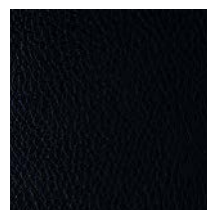
358



360



359



150



357

Divina

Category 80

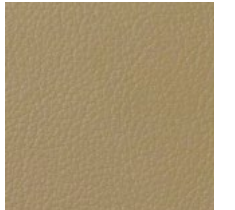
collection: Leather
origin: scandinavian bullhides
thickness: 1,2 - 1,4 mm
surface: pigmented nappa with fine grain structure



cognac



pietra



deserto



antracite



muschio



caramello

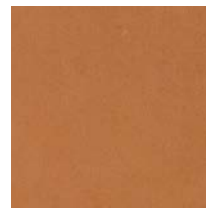
Category 8o

Elmosaddle

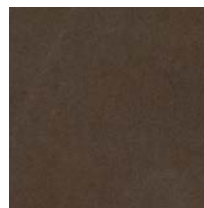
collection: Leather
origin: grain leather from Scandinavian cattle
thickness: 1.0 - 1.2 mm
light fastness: 3
rubbing fastness: wet 80/4, dry 2000/4
surface: aniline, full grain



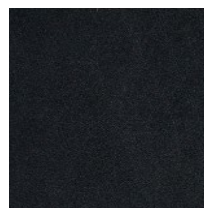
12129



43131



48017



99115

Category 8o

Tundra

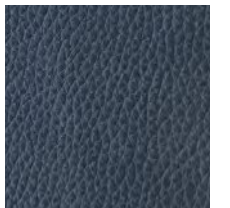
collection: Leather
origin: south german bullhides
thickness: 2.0 - 2.2 mm
light fastness: 3
rubbing fastness: dry and wet 3
surface: aniline



600 choco



603 taupe



604 basalt



606 dark olive



602 sahara



601 cognac

Outdoor collection

prostoria

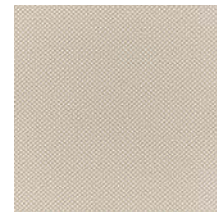
Category 300

Acero

collection: Outdoor
composition: 100% solution dyed acrylic
width: 140 cm
abrasion resistance: 40.000 cycles
light fastness: class 7-8
rubbing fastness: 5 dry and wet



9287



15102



793079

Category 300

Apache

collection: Outdoor
composition: 100% solution dyed acrylic
width: 140 cm
abrasion resistance: 45.000 cycles
light fastness: class 7-8
rubbing fastness: 5 dry and wet



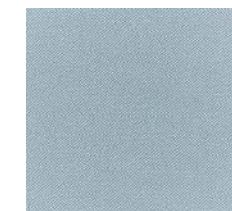
002



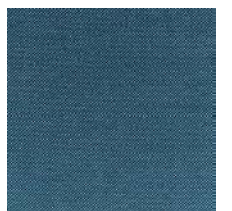
004



008



010



011



015

Category 300

Erfoud

collection: Outdoor
composition: 100% solution dyed acrylic
width: 140 cm
abrasion resistance: 50.000 cycles
light fastness: class 7-8
rubbing fastness: 5 dry and wet



79



71



81



2010



150



16020



82



8715



7587



92693



180



72



102

Category 300

Patio

collection: Outdoor
composition: 100% Trevira CS
width: Approx. 140 cm
piling: 4-5 (ISO 1-5)
abrasion resistance: 50.000 cycles
light fastness: class 7
rubbing fastness: 4-5 dry and wet
manufacturer guarantee: 10 years
sustainability: Greenguard Gold, HPD, EPD



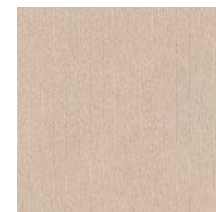
0170



0220



0340



0430



0780

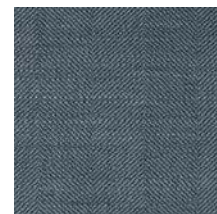
Category 400

Tan tan

collection: Outdoor
composition: 100% solution dyed acrylic
width: 140 cm
abrasion resistance: 50.000 cycles
light fastness: class 7-8
rubbing fastness: 5 dry and wet



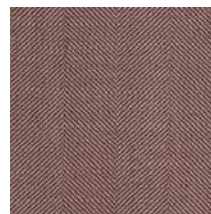
7587



8182



9479



13093

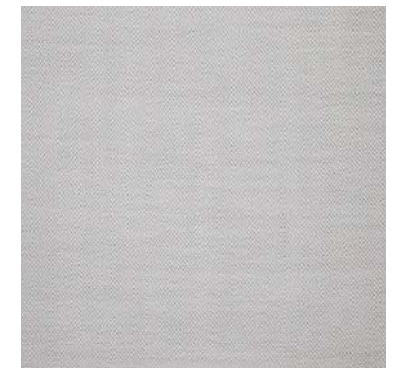


92693

Category 400

Zagora

collection: Outdoor
composition: 100% solution dyed acrylic
width: 140 cm
abrasion resistance: 50.000 cycles
light fastness: class 7-8
rubbing fastness: 5 dry and wet



2010



8271



8281



20160



92693

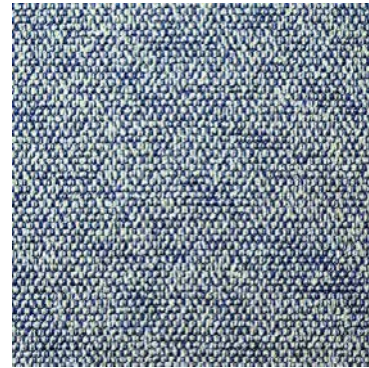


170150

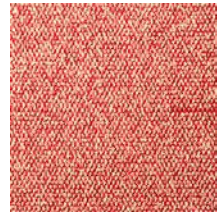
Category 600

Rococò

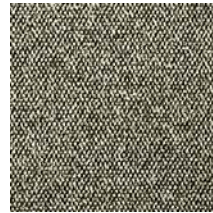
collection: Outdoor
composition: 97% PP, 3% PES
width: 137 cm
abrasion resistance: 40.000 cycles



navy



**rouge
mariniere**



sale pepe

Category 700

Libera

collection: Outdoor
composition: 100% PP
width: 134 cm
abrasion resistance: 40.000 cycles



Rice 001

Contacts

Prostoria Ltd.

Pustodol Zacrecki 19G
49 223 Sv. Kriz Zacetje
Croatia
T: +385 49 200 555
M: wholesale@prostoria.eu
M: export@prostoria.eu
www.prostoria.eu

Please contact us for any information:
Monday-Friday: 08-16 h

COPYRIGHT 2023

The Materials Book is valid from is valid from 01. 01. 2023, until the new edition is published.

Prostoria Ltd. is not responsible for errors made in the print. The photos are informative. Possible texture and colour variations are caused by the printing process.